

005540

RECEIVED  
LARAMIE COUNTY  
CHEYENNE, WY.

CERTIFIED LAND CORNER RECORDATION

'86 FEB 21 PM 3 43

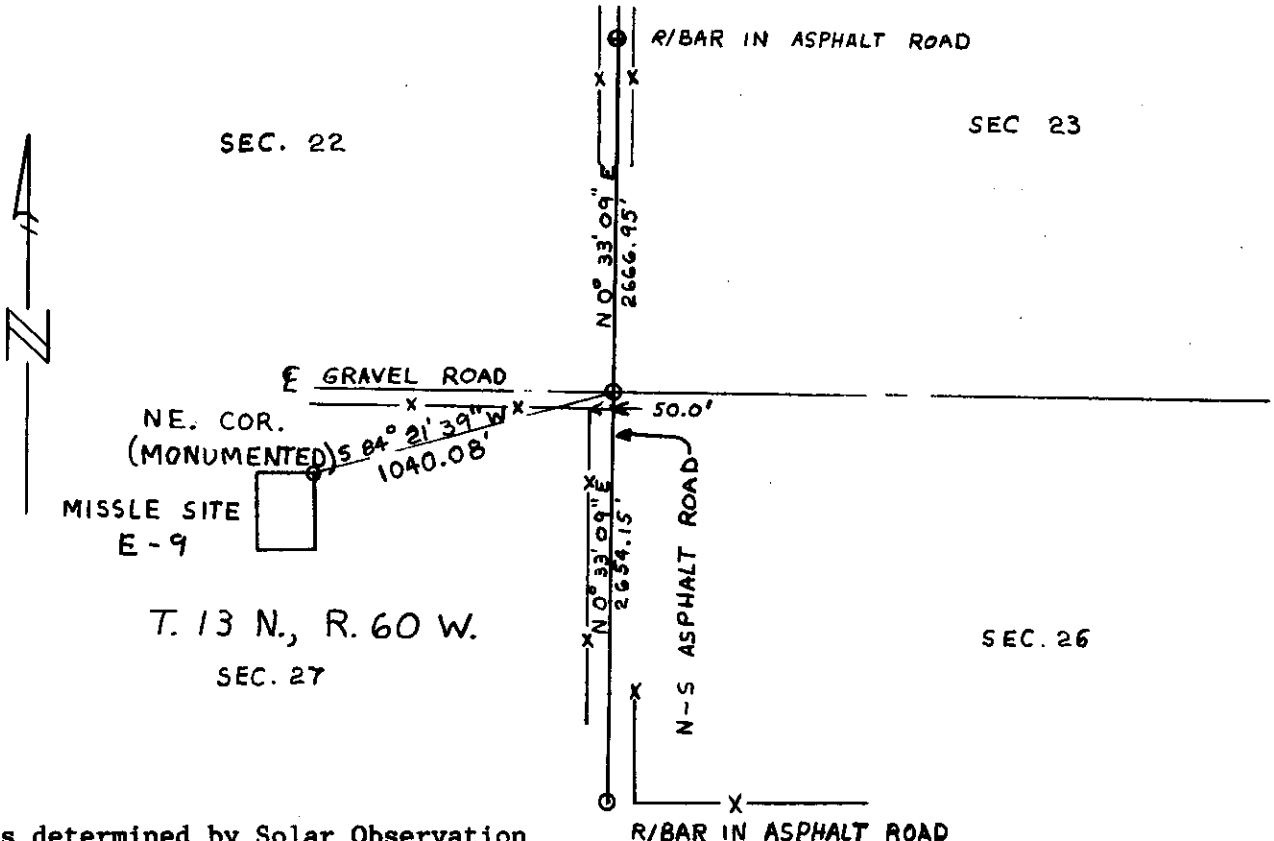
DESCRIPTION OF CORNER EVIDENCE FOUND, AND ORIGINAL RECORD (If known)

The corner of Sections 22, 23, 26, and 27, T.13N., R.60W., 6th P.M., Laramie County, Wyoming reestablished 50.0' East of R.O.W. fence to South and on centerline of gravel road to west and on line between evidence found of 1/4 section corners to N. and S.

DESCRIPTION OF MONUMENT AND ACCESSORIES ESTABLISHED TO PERPETUATE THE ORIGINAL LOCATION OF THIS CORNER:

At the corner, set a pk nail in asphalt surface, from which: Set a No. 4 rebar with plastic cap, bears N.50°02'58"W., 62.69 feet distant. Set a No. 4 rebar with plastic cap, bears S.56°29'17"W., 58.13 feet distant a concrete monument with brass disk, USGS BM, M80 1952 bears N.76°36'58"W., 86.30 feet distant the NE. corner of Missile Site (E-9) bears S.84°21'39"W., 1040.08 feet distant.

SKETCH, WITH COURSE AND DISTANCE TO ADJACENT CORNER IF DETERMINED IN THIS SURVEY. (May Sketch or Paste Reproduction on Reverse Side.)



Bearings determined by Solar Observation

I, Jeffrey D. Youngquist certify that I have carefully performed or reviewed the work done on the diagrammed corner as reported on this recordation form and approve the same.

*Jeffrey D. Youngquist* Signature of Surveyor  
R.L.S 3515 Registration No.

STATE OF WYOMING,  
Office of Clerk and Recorder,  
Laramie  
County of \_\_\_\_\_

This "corner record" was filed for record on the 21 day of Feb, 1986, was noted on the cross-index plat and is assigned page No. \_\_\_\_\_, in book No. 1224

|                       |          |          |            |
|-----------------------|----------|----------|------------|
| County Official       |          |          |            |
| Cross Index No. _____ | T. _____ | R. _____ | Mer. _____ |
| _____                 | T. _____ | R. _____ | Mer. _____ |
| _____                 | T. _____ | R. _____ | Mer. _____ |
| _____                 | T. _____ | R. _____ | Mer. _____ |
| _____                 | T. _____ | R. _____ | Mer. _____ |
| _____                 | T. _____ | R. _____ | Mer. _____ |
| _____                 | T. _____ | R. _____ | Mer. _____ |